

ABBREVIATED PROJECT LIST: LEED AND GREEN DESIGN CONSULTING



CityCenter: Block C, Las Vegas, NV

MGM MIRAGE Design Group is developing the largest private real estate project in the United States on the Las Vegas Strip with a target of Silver LEED certification. The project is a \$9.4 Billion development, with 18 million square feet of buildings. CityCenter is looking to lead the Las Vegas strip and the nation in its efforts at sustainability—a first for a project of this size. **Adamson Associates Inc.** are the architects of record, along with **Hamilton Anderson** as the Interiors AOR. **Flack & Kurtz** are the MEP engineers and **Halcrow Yoles** are the structural engineers for the four buildings listed below, with **Gensler** acting as the executive architect for the entire project on behalf of MGM MIRAGE, and **Office of James Barnett** as the executive landscape architect. **Perini** and **Tishman** are the primary contractors for the projects. Fore Solutions has been working since 2006, in collaboration with **Simon & Associates** and **CTG Energetics**, as the LEED consultant for four of the project's six major buildings, commonly known as "Block C", totaling ~4.5 million square feet. The projects are:

CityCenter: The Harmon, Las Vegas, NV

LEED NC Target: Silver

Foster + Partners is the design architect for this tower, which will be operated by The Light Group. The tower houses a hotel, and an additional podium area contains restaurants, shops, conference facilities, and a spa. The Landscape architect is **Martha Schwartz**, and the primary interior designers are **Munge Leung, Richardson Sadeki, Flex Designs, and SADI**.

CityCenter: Mandarin Oriental, Las Vegas, NV

LEED NC Target: Silver

Kohn Pederson Fox is the design architect on this over 1,000,000 square foot five-star hotel/residential tower. The Mandarin will contain high-end dining and resort facilities, retail, event facilities, and a chapel along with hotel rooms, condominiums, and Spa. The Landscape Architect is **Hargreaves** and the interior designers are **Tihany, Page & Steele, and Kay Lang**.

CityCenter: Crystals, Las Vegas, NV

LEED CS Gold Certified

Studio Daniel Libeskind designed this low-rise complex with an iconic roof located between the Harmon and Mandarin Oriental, with the VEER towers protruding from the southwest corner. The Crystals is a mixed-use dynamic area of high-end shops, entertainment and restaurants. Interior spaces will feature an interior design by **Rockwell Group** and features from **WET** design. The landscape architect is **DIRT**.

CityCenter: Veer® Towers, Las Vegas, NV

LEED NC Target: Silver

Murphy/Jahn is the design architect on these upscale high-rise condominium towers. These two leaning towers with rooftop pool decks will feature energy-saving sunshade devices and maximize the use of fresh air and light throughout the building. The interior designer is **Dianna Wong**, and the landscape architect is **Martha Schwartz**.



Harvard Allston Science Complex, Boston, MA
LEED NC Target: Gold

Fore Solutions is the LEED consultant for **Behnisch Architekten** and **Payette Associates** for a new science complex for Harvard University - the first project for the Allston Development Group on behalf of Harvard University. The four interconnected laboratory buildings will incorporate some of the latest innovations in sustainable design features. The team includes **Next Phase Studios** as associate architects, **Vanderweil** as the MEP Engineer, **Transsolar** for sustainable engineering, **Stimson Associates** for Landscape Architecture, **Buro Happold** for Structural Engineering, and **Nitsch** for Civil Engineering. Turner Construction is the Contractor. Harvard Green Campus Initiative is a key team member in ensuring this approximately 1 million SF project is on the forefront of sustainable design. The project is currently targeting a LEED Gold rating.



Arizona State University Science and Technology Building, Tempe, AZ
LEED NC Certified: Gold

Fore Solutions was the LEED consultant for this new Interdisciplinary Science and Technology Laboratory Building (ISTB 1) at Arizona State University designed by **Perkins + Will**. The 160,000 SF building is the first of multiple phases of research infrastructure built at the Tempe campus. The state-of-the-art laboratory building houses Life Sciences and Engineering faculty research. In addition to LEED consulting and documentation, Fore Solutions evaluated the project using the Labs21 criteria. The project was awarded LEED Gold Certification.



Hannaford Augusta Store, Augusta, ME
LEED for Retail Certified: Platinum

Hannaford Bros. Co., based in Scarborough, ME, achieved LEED Platinum Certification for the new Augusta grocery store. The project is designed by **Next Phase Studios** with **WBRC** as the architect and engineer of record. The proposed 49,000 square foot new store will be a laboratory for the company to test new innovations that lower energy usage, waste and water consumption. The project's green design features include: daylighting, solar photovoltaic panels, geothermal heating and cooling, high efficiency refrigeration, energy efficient lighting and an advanced recycling program. Fore Solutions is the LEED consultant for this project managing the LEED for Retail Pilot process.



Baxter School, Falmouth, ME
LEED NC Certification: Silver

Fore Solutions was the LEED Consultant to this new middle school, the first LEED certified building for the State of Maine Bureau of General Services. Designed by **Barba + Wheelock Architects**, the project is a one story, 10,000 SF building located on Mackworth Island, Falmouth, across the harbor from Portland, Maine. Completed in 2004, the school features daylighting, energy-efficient lighting and mechanical systems, recycled and local materials as well as landscaping and construction practices that limit site disturbance and preserve the unique qualities of the site. Many of the green features, particularly the daylighting and lighting strategies, are also 'deaf-friendly' education features.



Limitless Towers: Amman, Jordan
LEED NC Target: Silver

Fore Solutions is the LEED Consultant to **Murphy/Jahn** for this 200-meter residential towers project in Amman, Jordan. Sustainability was incorporated into the initial concept of the program and the project will employ both active and passive methods for energy conservation. This modern interpretation of residences will combine traditional materials with modern building techniques and will employ cutting-edge technologies – pushing the envelope of green design. The towers, when completed, will house nearly 2,000 persons. Set in a park-like setting with public transportation readily available, this project is part of Limitless' initiative to assist in the development of a pedestrian-friendly city. The MEP engineers are **Whitby & Bird**, the Structural engineer is **MKA**, and the landscape architect is **Rainer Schmidt**.



Jackman Border Station, Sandy Bay, ME

LEED NC Target: Silver

Orcutt Associates is the architect on this new 28,000 SF border station that incorporates green design strategies into the government safety requirements and is targeted to obtain LEED Silver Certification. The design team includes **Bennett Engineering** for MEP, **Becker** for structural engineering, **Gorrill Palmer** for Civil, **Deluca Hoffman** for Landscape, and **Investment Engineering** for Commissioning. Fore Solutions is the LEED consultant on the project.



East End School, Portland, ME

LEED NC Certification: Silver

This 73,000 SF school and community center replaced Jack School, a building that was closed and demolished because of extensive mold problems and structural deficiencies. It was of critical importance to the community that the new school, which incorporates a community branch library and meeting rooms, met the highest standards for good indoor environmental quality. The result is an energy efficient design with flexible light-filled spaces and an excellent indoor environment that satisfies the requirements of students, teachers and the greater community. The project was design by **Stephen Blatt Architects** and was awarded LEED Silver Certification with Fore Solutions as the consultant. The design team included **Bennett Engineering M & P**, **Bartlett Design** for Electrical, **Carrol Associates** for Landscape, and **Deluca Hoffman** for Civil.



New York Sports and Convention Center, New York, NY (Project Terminated)

LEED NC Target: Silver

Fore Solutions was the LEED consultant to this \$1.4 billion project on the far west side of New York City. The architect was **Kohn Pederson Fox**, with **Flack + Kurtz** as the MEP engineer. Straddling the Hudson Rail Yards, the project planned to encompass a new stadium for the New York Jets, a 1500 room hotel, office, retail and residential space, restaurants, cafes and a series of parks along the waterfront. The project was targeted to receive LEED Silver certification, but was terminated in 2005 for political reasons.



Tufts School of Medicine, Boston, MA

LEED NC Target: Silver

The Tufts School of Dental Medicine is expanding with a five-story, vertical addition to an existing ten-story building. The project is located in an urban setting adjacent to the subway system. The building footprint is not being increased. The significant increase in square footage is a result of building vertically – an ideal sustainable solution. The project will also not provide additional parking spaces in order to encourage use of public transportation. Light colored roofing and paving will minimize the heat island effect. The new addition will allow for the expansion of patient clinics, classrooms, and offices, as well as continuing education and research facilities. Fore Solutions is the LEED Consultant to **ARC Cambridge** for the expansion of the Tufts University School of Dental Medicine.



Tabor Academy Science & Math Center, Marion, MA

LEED NC Certification: Gold

Tabor Academy renovated their Science and Math center into a LEED Gold Building. Fore Solutions was the LEED consultant, and worked closely with the architect, **Saltonstall Architects**, the design team, and Tabor's Facility Management team. The contractor was **Suffolk**. The project involved a major renovation of the existing building. The addition of new laboratory facilities in the classrooms was a major focus of the renovation. The project achieved a LEED Gold rating in 2009.



Colby College, Cotter Union, Waterville, ME
LEED NC Certified: Silver

Bolin Cywinski Jackson worked with the college to create an addition for the campus' student center to both invite community and embody the campus' principles of environmental stewardship. The project expanded Colby College's Cotter Union by 18,000 square feet with additions of the Pulver Pavilion and a new bookstore. Fore Solutions was the LEED consultant on the project, which achieved LEED Silver certification in 2009.



Waynflete Art Center Addition, Portland, ME
LEED NC Target: Silver

The Waynefleete School community has expressed a strong interest in pursuing green building strategies for the new addition to the existing award-winning Arts Center by Scott Simons Architects (shown here). Fore Solutions has assisted **Scott Simons Architects** as the LEED consultant on the project, which is currently targeting a LEED Silver rating. The auditorium is complete, and final renovations of the old Gym are near complete. The design team included **Johnson & Jordan** as M&P, **Pinkham & Greer** for Civil, **Stantec** for Electrical and **Michael Boucher** for Landscape Architecture. The contractor is **Stroudwater**.



Mount Pleasant Home, Jamaica Plains, MA
LEED NC Target: Silver

Mount Pleasant, an assisted living facility in Boston, Massachusetts, is planning a renovation and addition to its facilities with the intention of using green design, sustainable technology and renewable energy to the fullest extent possible. In addition to being the project's LEED Consultant, Fore Solutions contributed to a comprehensive feasibility study of renewable energy and energy efficiency options undertaken by **Next Phase Studios** for the project. The analysis conducted for the report recommends a range of measures including rainwater collection for irrigation and non-potable water use, lighting controls, solar photovoltaics, solar domestic hot water, ventilation heat recovery and LEED tracking and documentation.



Center for Wellness, College of New Rochelle, New Rochelle, NY
LEED NC Target: Silver

Fore Solution is the LEED Consultant to the new Center For Wellness, an 82,000 SF natatorium under construction at the College of New Rochelle in New Rochelle, NY. The architect is **Ikon.5**, with **Consentini** as the MEP engineer. In addition to a swimming pool, the project houses a gymnasium, classrooms, and staff offices. Additionally, Fore Solutions performed Energy Modeling Services (using DOE-2 -eQuest). These services assist the team and client in understanding overall energy performance relative to the Energy Code. The project is complete, and final documentation is being compiled, with the goal of LEED Silver certification.



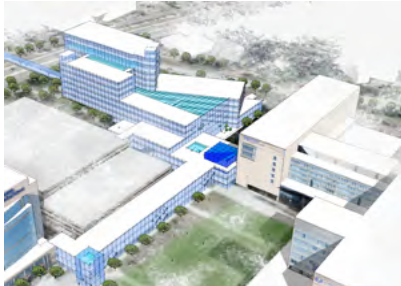
Omniyat Towers, Dubai, UAE
LEED CS Target: Gold

Foster + Partners, with **PHA Consult**, is the Architect for this tower planned for the Business Bay Plot 18. It comprises twin multi-faceted office towers over a retail / carpark podium. The building comprises approximately 60,000m2 GIA of high quality office space to a Category "A" core and shell fit out, including 9,300m2 of retail at ground and first floor level. There will be 6 levels of parking with 4 levels below ground and 2 above. The towers are anticipated to be 35 to 40 stories in height, with exposed outside terraces and open "Oyster" zones interspersed through the building. This project has been put on hold due to the current economic climate of Dubai.



Saco & Biddeford Savings Institution, Saco, ME
LEED NC Certification: Silver

Fore Solutions was the LEED consultant on this 14,000 square foot operations center. **Reed & Co Architecture** was the architect, with **Bartlett Design** offering electrical design and **Mechanical Systems Engineers** performing Mechanical and Plumbing design. Daylighting and a raised floor system are a few highlights of this project, which was awarded LEED Silver Certification.



University of Massachusetts, Sherman Center, Worcester, MA
LEED NC Target: Silver

The Albert Sherman Center, a 500,000 SF biomedical research facility, will house the University of Massachusetts Advanced Therapeutics Cluster, which will include 100 faculty from three programs. The space will include 300,000 SF. of wet research laboratory research space, clean rooms and core research space as well as 200,000 SF of dry space including a 300-seat auditorium, teaching areas and library, conference and support spaces. Fore Solutions is the LEED Consultant and Energy Consultant to **ARC Cambridge** with **BR+A** as the MEP, **LAM** as lighting Consultant, and **VHB** for Civil.



Genzyme Biologics Support Center, Framingham, MA
LEED NC Target: Silver

Genzyme is expanding their facilities in at 74 New York Avenue in Framingham, Massachusetts. This lab facility will be employing innovative techniques such as re-using reverse osmosis reject water for toilet flushing, chilled beams for cooling and solar hot water heating is being considered as well. Ventilation in the labs will be monitored to reduce the air changes per hour when the space is unoccupied. Fore Solutions is the LEED Consultant to **ARC Cambridge** for this project. **BR+A** is the MEP Engineer.



Turner Contemporary, Margate, England (project terminated)

Fore Solutions provided sustainability consulting services for this new art gallery to be built in Margate on the east coast of England in the United Kingdom. The building was designed by Oslo, Norway based **Snohetta** and features a shell of recycled steel that will be manufactured off-site and shipped to the site. Gunnar Hubbard participated in design workshops in Norway and London to enhance the green agenda on the project. The local mandate required this level of consideration. Fore Solutions was the sub-consultant to **Davis Langdon Schumann Smith**. The project was never realized due to the economic challenges.



Four Times Square, New York, NY

Prior to starting Fore Solutions, Gunnar Hubbard worked on this 48-story office tower in the heart of downtown Manhattan was the first large-scale speculative green building built in the nation. The 1.6 million square foot skyscraper cost \$500 million and was completed in 1998. Using 40 percent less energy than the conventional standard for Manhattan, the building features efficient gas-fired absorption chillers, efficient lighting strategies and daylighting, PV's integrated into the building's skin, low-emitting carpet, wall covering, paint and cleaning materials as well as an air delivery system that provides 50 percent more fresh air than industry codes. Through the **Rocky Mountain Institute's** Performance Based Fees project, Gunnar Hubbard worked with the **the Durst Organization**, the Architects-**Fox & Fowle**, the engineers-**Cosentini**, the contractor-**Tishman Construction**, and energy consultant-**Steven Winter Associates** to create a national example of energy and environmental performance on a 48 story, 1.6 million sq. ft., speculative project.



Boston Chinatown Neighborhood Center, Boston, MA
LEED CI Certification: Silver

This 40,000 SF building in downtown Boston is a community center with support services, including a day care center, for the Boston Chinatown Neighborhood Center. Fore Solutions was the LEED Consultant, in collaboration with the **Integrative Design Collaborative**, and the Architect was **The Architectural Team. Suffolk** was the contractor. Among the many attributes of the project are: energy and water savings, good lighting, air quality and green, low-emitting materials that are specified to meet LEED criteria. A pilot LEED Commercial Interiors project, BCNC was awarded LEED for Commercial Interiors Silver rating in 2006.



Bowdoin Watson Arena, Brunswick, ME
LEED NC Target: Certified

Fore Solutions is the LEED Consultant for the Ice Arena project. The arena, adjacent to the Farley Field House, will feature a 90 ft. x 200 ft. ice surface, meeting rooms, locker rooms, offices and equipment rooms. Energy efficient refrigeration and dehumidification systems have been designed. The absorption chiller, using ammonia instead of HCFC or HFC refrigerants, has no direct ozone depletion or global warming potential. Other green features include construction waste management to divert materials from the landfill, construction indoor air quality management, recycled and regional materials use, designated open space off-site, and an extensive green education component.



Wesleyan Allbritton Center
LEED NC Target: Silver

This project includes the renovation of an existing historic building on the Wesleyan University campus that once served as the campus student center and is now being transformed into classrooms and offices to support the Allbritton Center for the Study of Public Life. As a historic renovation, the building will maintain almost all of its structure and envelope including triple pane windows that will be once again made operable. A small section of green roof visible is from the rooftop café. Fore Solutions is the LEED Consultant and energy analyst to **Noyes Vogt Architects**. The energy model demonstrated significant savings using active chilled beams and taking advantage of a new combined heat and power plant at the University.



Genzyme Manufacturing Expansion
LEED NC Target: Silver

Genzyme is expanding their manufacturing facility in Allston and adding a central plant with a cogeneration unit to create their own power onsite. Waste heat, captured from natural gas turbines, is transferred and used to heat hot water and supplement the building's heating load. This glass expansion on the south side of the building maximizes the use of natural daylight through light shelves that reflect light deep into the space while providing shading in the summer months. The lighting design by **LAM Partners** has significantly lowered the energy required for lighting, which includes daylight dimming controls and occupancy sensors. Fore Solutions is the LEED Consultant to **ARC Cambridge** on this project.



Lighthouse – Dubai International Financial Center, Dubai, UAE
LEED CS Target: Platinum (Fore as Energy Analyst Only)

With **Atkins** as the architect, this 400 meter tall, 66-story luxury office tower aspires to be a low-carbon commercial building, aiming to reduce total energy consumption by up to 65% and water consumption by up to 40%. This will be achieved through the use of passive solar architecture, many energy and water saving engineering solutions, recovery strategies for both energy and water, and a building integrated photovoltaic system. This unique building will become a working prototype for low carbon towers within the region and a model for more sustainable developments in the future. Features: 84,000 square meters of commercial space as well as basement and podium parking, convention centers, retail, environmental visitor centre and a park. Fore Solutions, as sub-consultant to **Green Technologies FZCO**, is the energy analyst. Whole building energy simulation is being used as a decision-making tool for energy conservation measures and for LEED EAc1 documentation.



Bangor Courthouse, Bangor, ME

This 88,000 SF building, designed by **Leers Weinzapfel Associates**, is the largest new construction project the State of Maine has undertaken in recent years. Fore Solutions was hired as the green building consultant to the project, and guided the design team toward complying with the State of Maine's executive order requiring that all State building incorporate LEED guidelines, with hopes to submit for official USGBC LEED certification.



Tidewater Village, Falmouth, ME

LEED NC Certification: Silver

Falmouth, Maine was the site of Osteopathic Health Care of Maine's first green building. Fore Solutions provided green consulting services on this medical complex, comprised of two doctors' offices designed by **Archetype Architects**. The client decided that incorporating principles of environmental sustainability and superior indoor environmental quality aligned with their goal of providing the highest level of experience for their patients. Some green features include low-VOC materials and significant daylighting. The project was awarded LEED Silver Certification in 2008.



Congin School, Westbrook, ME

This 42,600 SF Elementary School in Westbrook, Maine was renovated to provide an improved environment with state of the art technology updates for its academic community. It re-opened in 2004. Fore Solutions, as the green building consultant to **Winton Scott Architects**, worked with the design team to evaluate and prioritize energy efficiency and high performance features achievable within the constraints of a pre-established renovation program and budget. Daylighting was a primary driver of the project's renovation. The design was also modified and modeled to include energy efficient lighting, an upgrade of the mechanical system and low-emitting finish materials. The design team included **Bartlett Design** and **Mechanical Systems Engineers**.



Mashpee Commons, Providence, RI

Designed by **Imai Keller Moore** and Cornish Associates, with the help of consulting firm **Duany/Plater-Zyberk**, Mashpee Commons is one of the first retrofits of a strip shopping center into a mixed-use, mixed-income, pedestrian-friendly town center. Fore Solutions worked with the developers to help incorporate green building principles into their already existing principles of new urbanism and a sustainable community plan. Aided by Fore Solutions, the project investigated options for "greening" the development through the use of green building guidelines and the LEED standards.



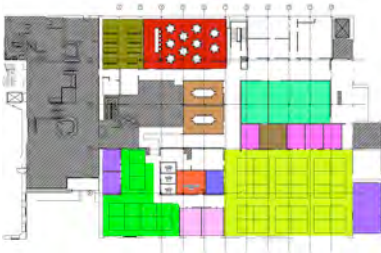
Stop and Shop, Foxboro, MA

Prior to starting Fore Solutions, Gunnar Hubbard worked as the Green Building Consultant to Stop & Shop grocery stores, a subsidiary of Ahold, Inc., to successfully green the design and construction of a Low Energy Super Store (LESS) in Foxboro, Massachusetts, completed in 2002. The determination to succeed, coupled with a strong design and construction team, made this project possible. A target annual energy savings of 30% was defined as the goal of the project, and after two years of operations, actual data collected has demonstrated that this goal was met. The actual performance data from the store is showing a range of monthly energy savings from 24% to 34%.



Brick Hill Cottages, Portland, ME

This complex, multi-faceted project, undertaken by developer Richard Berman with **Winton Scott Architects**, transformed the Maine Youth Center into a mixed-use development including housing, offices, and recreational facilities. A major portion of the project was the rehabilitation and renovation of five historic brick buildings, built from 1858-59. These buildings, unoccupied and in disrepair for years, were converted into housing. Fore Solutions was hired to assist the architect in ensuring that the buildings are as energy efficient as possible, while maintaining excellent indoor air quality and environmental performance. The contractor was **Wright Ryan**.



Aircuity Office and Showroom, Newton, MA

LEED CI Target: Platinum

Property Resource Group was working with their tenant, Aircuity, to develop an innovative interior space for the Aircuity showroom in Newton, MA. The project, designed by **Andrew Cohen Architects**, was targeting a LEED CI Platinum rating. Fore Solutions, in collaboration with CTG Energetics, was the LEED consultant on the project. The project was suspended in 2008.



Thurgood Marshall Federal Courthouse, New York, NY

LEED NC Target : Silver

Fore Solutions is the LEED Consultant on this 702,000 SF historic renovation project. The project seeks to incorporate the latest technologies of energy savings, indoor air quality and responsible material selection while highlighting the historic qualities that give the building its character. **Beyer Blinder Belle** is the architect on the project with **Flack & Kurtz** as the MEP. LEED Silver is the current target for certification, yet funding has put this target on hold.



Lachat Conservation Center - The Nature Conservancy, Weston, CT

LEED NC Target: Gold

Fore Solutions was LEED Consultant to the architects, **Edgecomb Design Group**, for this renovation and new construction project for The Nature Conservancy (TNC) in Weston, Connecticut. As an environmental organization, TNC is committed to meeting the highest standards for sustainable development and is targeting LEED Gold or better for the project. With the architects, Fore Solutions developed a protocol and timeline to assure that all aspects of the program were considered through the filter of green criteria, that the design team takes an integrated design approach and that the project met its goals for LEED certification and environmental performance.



The Loop, Punta Gorda, FL

The Wilder Group developed a large mixed-use development featuring over one million s/f of retail, office and hotels. Fore Solutions worked with the Wilder Group and the design team to investigate ways to incorporate principles of sustainability and green building design into their development. LEED for Neighborhood Development was used as a guideline along with LEED NC, CS, & CI for evaluating the potential of the development.



Pearl Place, Portland, ME

LEED for Homes Mid Rise Certification: Gold

Fore Solutions was the green building consultant on this 60-unit project by **Avesta Housing**. Avesta Housing was awarded a \$33,000 Green Communities Grant from the Enterprise Foundation for its Pearl Place project in Portland. This is the first award made in Maine – and only the second New England award. Pearl Place received the first LEED for Homes Exceptional Multi-Family Project award at USGBC's GreenBuild 2008 in Boston. Projects like Pearl Place helped to pioneer the use of environmentally sensitive, highly efficient systems and materials in the development of affordable housing. This site provides easy access to public transportation, schools, and services. Pearl Place demolished and recycled a former metal warehouse. It was sided with durable metal panels and finished with low VOC paints, green label carpets, water- and energy-efficient appliances. This project received a LEED Gold rating in 2008.



Falmouth Police Station, Falmouth, ME

LEED NC Certification: Silver

The Town of Falmouth was awarded LEED Silver for their new Public Safety building in 2008. Fore Solutions was the LEED consultant and the architect was **Port City Architecture**. Some features of the building include high efficiency CFC-free HVAC systems, SIPS Panel construction, reflective roof surfaces, and the use of regional materials. The occupants of the facility enjoy enhanced air quality due to the low VOC materials choices for adhesives and sealants, paints and coatings, flooring systems and composite wood products. Controls for both lighting and thermal comfort are available to individual workstations and natural daylight reaches nearly 90% of occupied space within the building.



Tom's of Maine Manufacturing Facility, Sanford, ME

LEED NC Target: Silver

Tom's of Maine is designing the renovation and expansion of their Sanford facility with sustainability principles in mind and will be targeting a LEED Silver rating. Introducing shading and trees to the current parking area will reduce the heat island affect and alternative transportation methods will be encouraged. Daylighting techniques and natural ventilation possibilities will be explored to enhance occupant comfort and reduce operating costs. Fore Solutions is the LEED Consultant and the architect is **TFH Architects** with **Allied Engineering** for MEP, **Becker** for Structural, and **Consigli** for construction.



Harborside Resort at Atlantis, Paradise Island, Bahamas

Fore Solutions evaluated LEED potential for the development of Harborside West, Phase II, at Atlantis Resort in Paradise Island, Bahamas for **Kerzner International Development**. Energy Modeling services were also provided to ensure high levels of energy efficiency could be realized for the project, with an emphasis on mechanical systems efficiencies and building envelope improvements. A greywater recovery treatment currently treats all Atlantis water demonstrating the commitment by the resort to preserve the islands limited water supply.